

UNIVERSITY OF LONDON

General Certificate of Education Examination

SUMMER 1972

ORDINARY LEVEL

Technical Drawing (Engineering) 2

Two hours

Solutions must be drawn in pencil, FULL SIZE unless otherwise stated. Candidates are reminded of the necessity for orderly presentation in their answers. The use of aids for the smooth drawing of curves is permitted.

The accompanying sheet shows, in first-angle projection, three parts which when assembled form the burner of a gas Soldering Stove.

Draw full size and in correct orthographic projection the following views of the assembled burner:

- (a) a sectional elevation on the centre line *AA*;
- (b) a sectional end elevation on *BB* looking in the direction of the arrows;
- (c) an inverted plan, i.e. looking on the underside of the burner.

Any dimension or detail of construction not shown on the drawing is left to the discretion of the candidate.

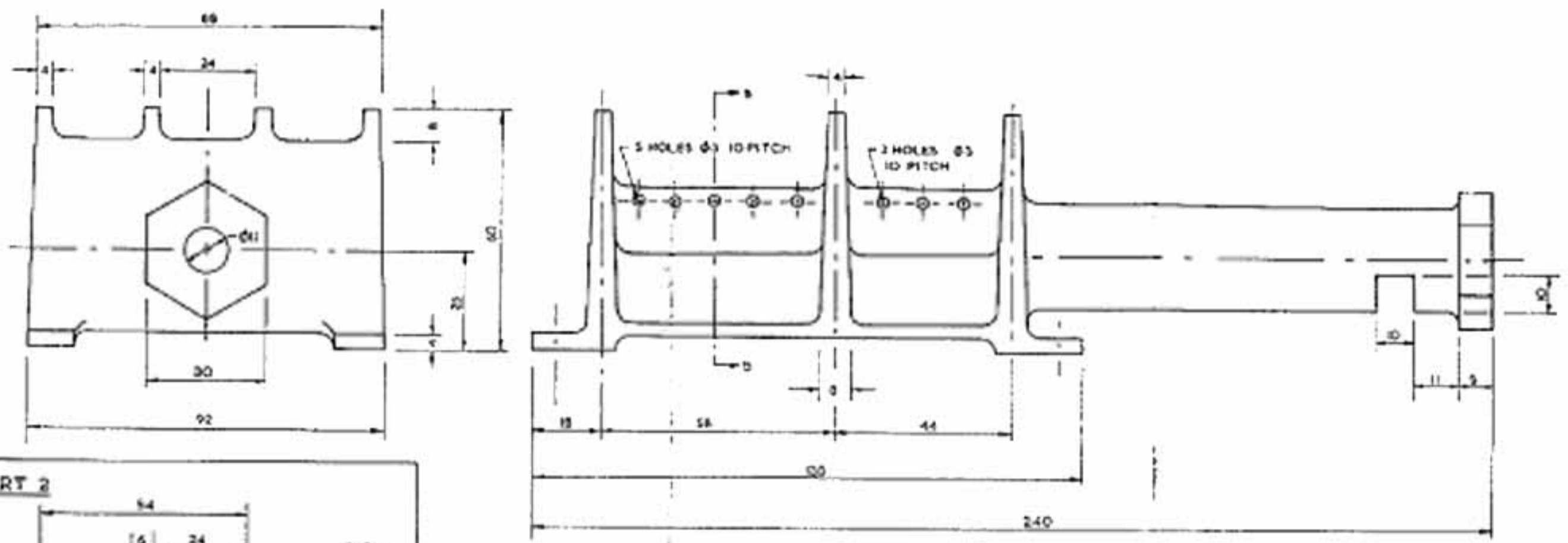
Hidden detail must not be shown on any of the views and dimensions are not required.

The gas jet holes in the section on *AA* may be indicated by small crosses only, and not by ellipses as shown on the question paper.

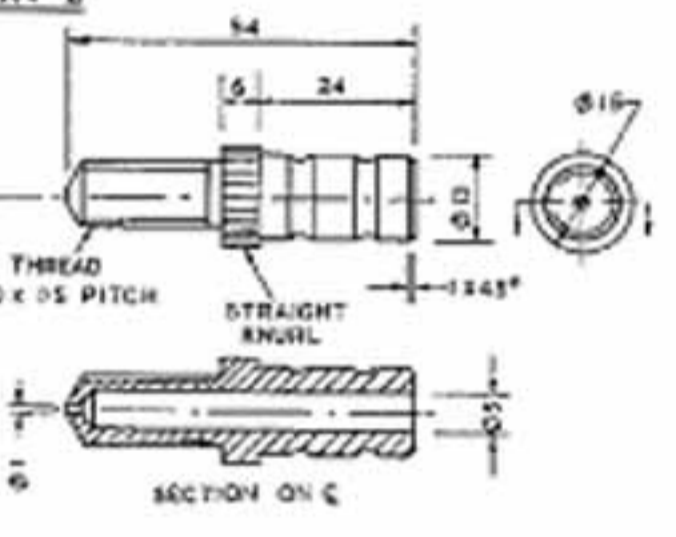
Either first-angle or third-angle methods of projection may be used: the method chosen must be stated on the drawing.

In any suitable position on the paper draw a title-block and in it print neatly the drawing title - Soldering Stove - the scale and the method of projection used.

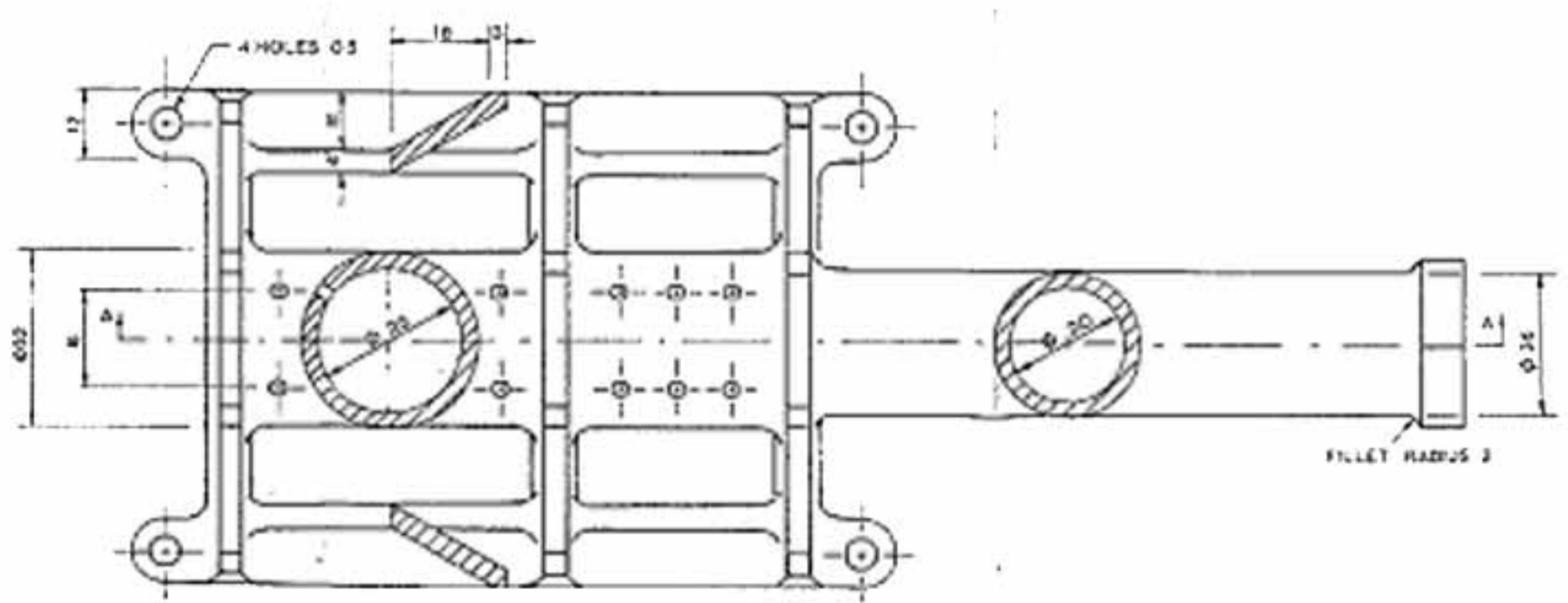
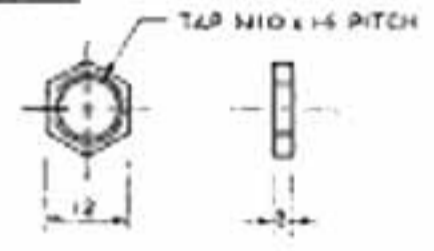
PART 1



PART 2



PART 3



FILLET RADIUS 2
ALL DIMENSIONS IN MILLIMETRES