

UNIVERSITY OF LONDON

GENERAL CERTIFICATE OF EDUCATION
EXAMINATION

SUMMER 1968

Ordinary Level

GEOGRAPHY II

Two hours

Answer FOUR questions. TWO must both be either from Section A or from Section B; the remaining TWO must be from Section C.

Credit will be given for good English and the orderly presentation of material; candidates who neglect these essentials will be penalized.

At the end of the examination any map used must be fastened, loosely but securely, inside the answer-book opposite the written part of the answer to which it refers.

Section A—North-Western Europe

1. Compare *either* Norway *or* Sweden with Switzerland under the headings (a) location (b) land use (c) communications (d) power supplies.
 2. Select *one* of the following journeys: Paris-Lyons-Marseilles; Paris-Strasbourg-Munich; Paris-Bordeaux-Spanish frontier. For the journey selected, describe the main surface features of the regions traversed, and illustrate your answer by a sketch-map.
 3. (a) Draw labelled sketch-maps to show the position of *two* of the following towns: Hamburg, Berlin, Leipzig, Essen, Cologne, Frankfurt-on-Main.
(b) Write a paragraph explaining the growth of any *one* of the towns listed in (a).
 4. (a) *On the map of Belgium and the Netherlands on page 4 mark clearly, giving a key:*
 - (i) Land below sea-level; land above 600 feet; the main barriers of the Delta Plan; areas planned for reclamation in the Ijsselmeer; two large canals.
 - (ii) Amsterdam, Rotterdam, Antwerp, Liège.
- (b) *In your answer-book:*
State how the rivers of the two countries are important to man.

5. Study the following passages and then answer the questions below.
- A. West Jutland has an undulating landscape, often bleak and monotonous, of low sandy hills and marshy plains. Formerly this was heathland, but much has now been reclaimed. The improved land is mainly under grass, but rye and potatoes are also grown. There are few towns here, and most people live in rather isolated scattered farms.
- B. East Jutland and the islands present a much richer appearance, with most of the land under arable cultivation, producing cereals, roots, other fodder crops, and sugar beet. In the islands particularly, the land is neat and well-kept, with many prosperous-looking farmhouses set among level cultivated fields. There are more towns in this part, and sometimes a great bridge rears above the skyline.
- (a) Give the geographical background of these descriptions of the two main divisions of Denmark.
- (b) Describe briefly the Danish dairy industry, showing how it is related to the agricultural information given.

Section B—North America

6. Write a geographical account of *one* of the following: the Laurentian Shield; Texas; the Colorado Basin.
7. Select a line *either* from Lake Winnipeg to the coast of British Columbia *or* from the southern end of Lake Michigan to Cape Hatteras (North Carolina) and
- (a) By means of an annotated sketch-section, show the regions traversed.
- (b) Describe briefly the surface features of *two* of the regions shown.
8. (a) Draw labelled sketch-maps to show the position of *two* of the following towns: San Francisco, Los Angeles, New Orleans, New York, Chicago.
- (b) Write a paragraph explaining the growth of any *one* of the towns listed in (a).
9. (a) On the map provided on page 5 mark clearly:
- (i) The Soo Canals, the Welland Canal, Niagara Falls, the St. Lawrence Seaway.
- (ii) The St. Clair river, Lake Huron, Lake Superior.
- (iii) Quebec, Montreal, Buffalo, Detroit, Duluth.
- (b) In your answer-book:
- Write an account of *either* agriculture in the Lakes Peninsula *or* trade on the Great Lakes.
10. Write short accounts of *two* of the following:
- (a) Industry in New England,
- (b) Land use in Florida,
- (c) Stock rearing on the High Plains,
- (d) Steel production in Pennsylvania,
- (e) Towns of the Fall Line.

Section C—The World

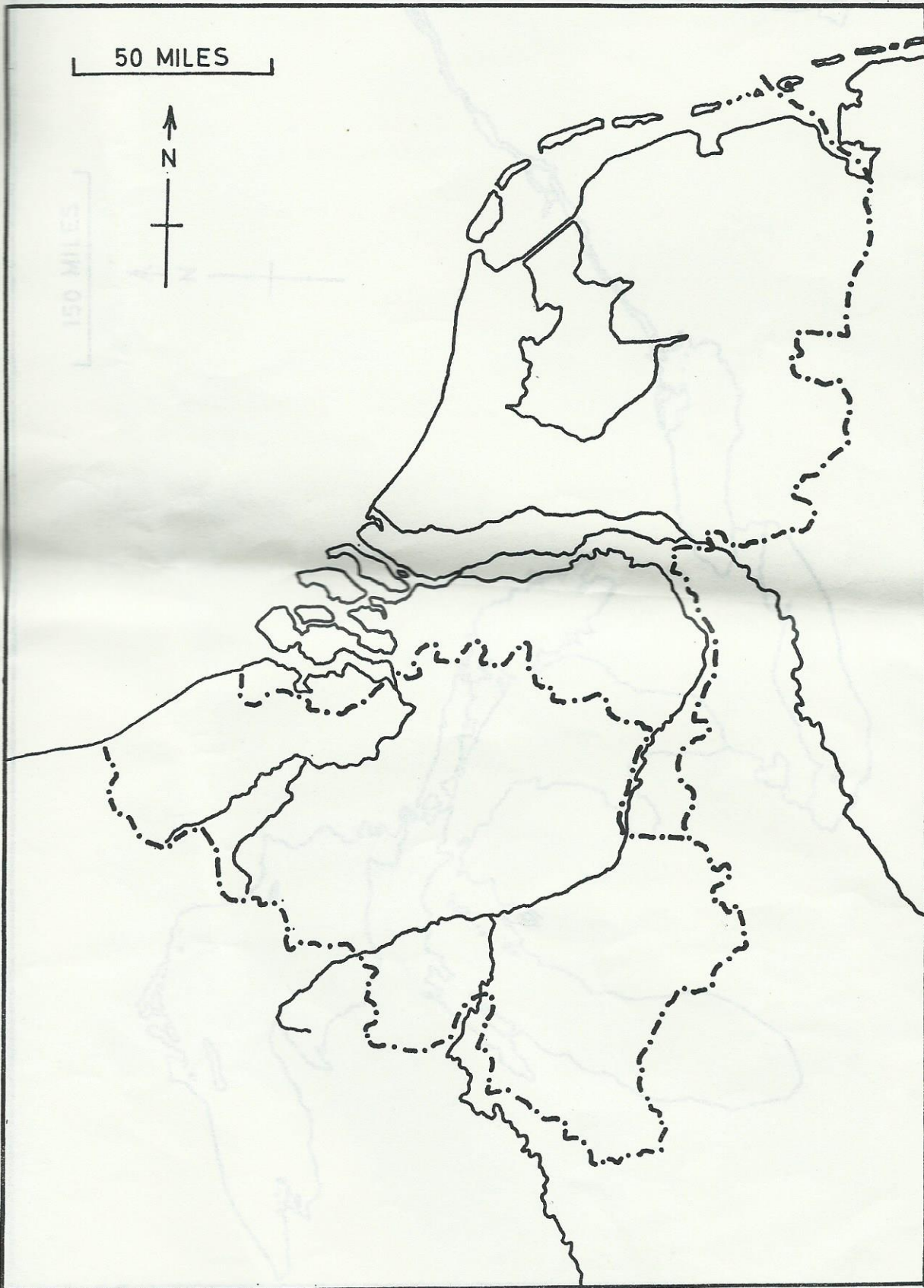
11. Study the pictures *A*, *B*, *C* and *D* on pages 6, 7, 8 and 9. The places shown are in rural Malaya, a suburb of Sydney (New South Wales), central Ghana, and Timbuktu (Mali).

In your answer-book:

- (a) Allot each picture by its letter to the correct place.
 - (b) Give as fully as possible your reasons for each choice.
 - (c) Draw an annotated sketch or diagram of *one other* house type to show how it is related to its local environment.
12. (a) Describe the characteristics of (i) a continental climate and (ii) a monsoon climate.
(b) Locate *one* major area of the world which has a continental climate and *one* which has a monsoon climate.
(c) Describe *two* ways in which *one* of these climates affects human activities.
13. Describe, with examples, what you understand by *two* of the following:
- (a) conurbations,
 - (b) flood plains,
 - (c) coral islands,
 - (d) nodal points,
 - (e) oilfields,
 - (f) crop belts.
14. Write a geographical essay on *one* of the following subjects:
- (a) Plantation agriculture,
 - (b) Irrigation,
 - (c) Glaciated landscapes.
15. (a) *On the map provided on page 10:*
- (i) Shade and name the Sahara, Arabian, Thar, and Australian deserts.
 - (ii) Mark and name the Himalayas and the plateau of Tibet.
 - (iii) Plot the following air routes, naming the towns concerned:
 - (a) Sydney-Darwin-Singapore-Calcutta-Karachi-Cairo-Athens.
 - (b) Sydney-Manila-Hong Kong-Tokyo.
- (b) *In your answer-book:*
- For each air route, describe the geographical difficulties which may be encountered.

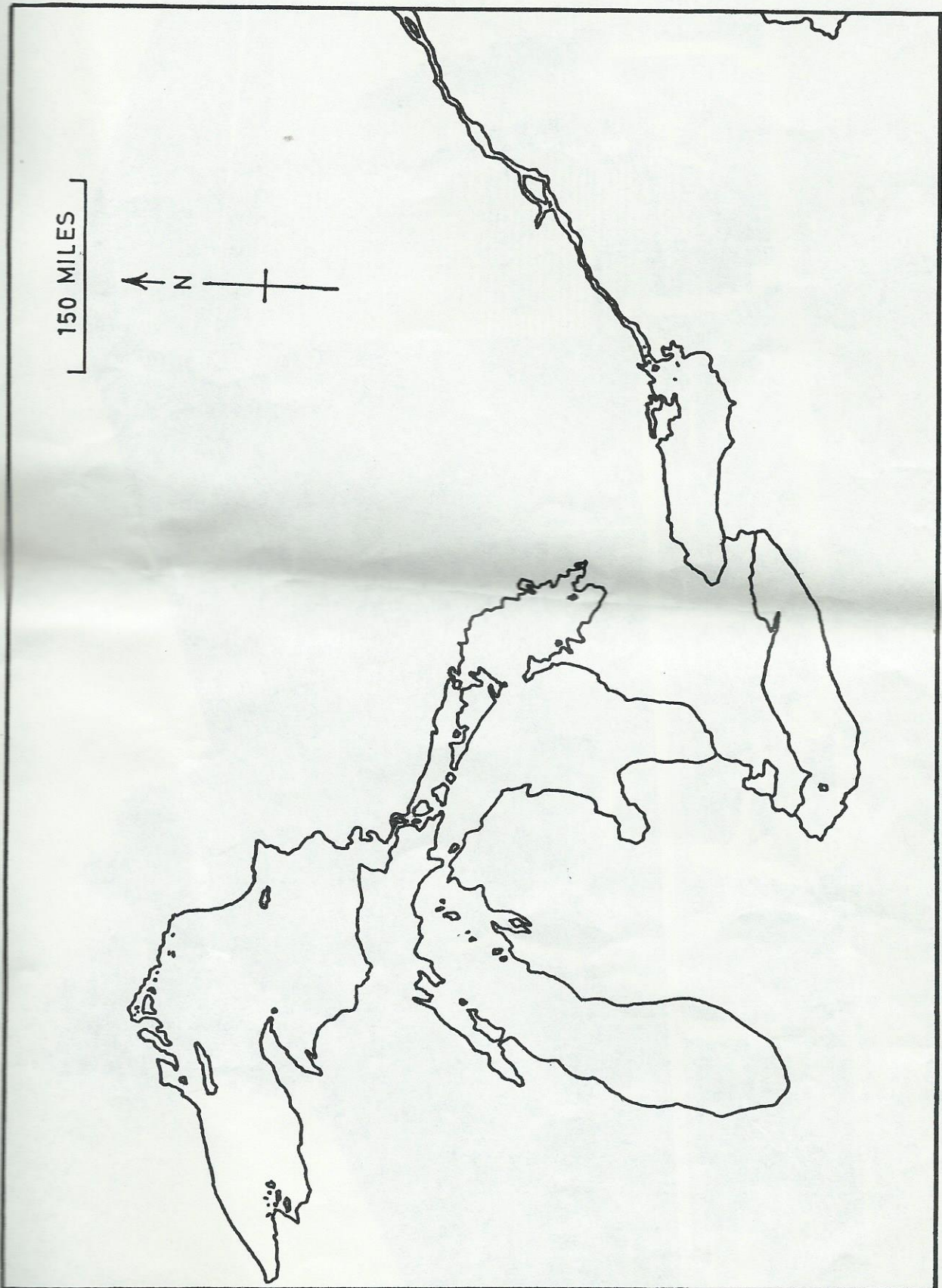
Write your Centre Number here.....

Write your Candidate Number here.....



Write your Centre Number here.....

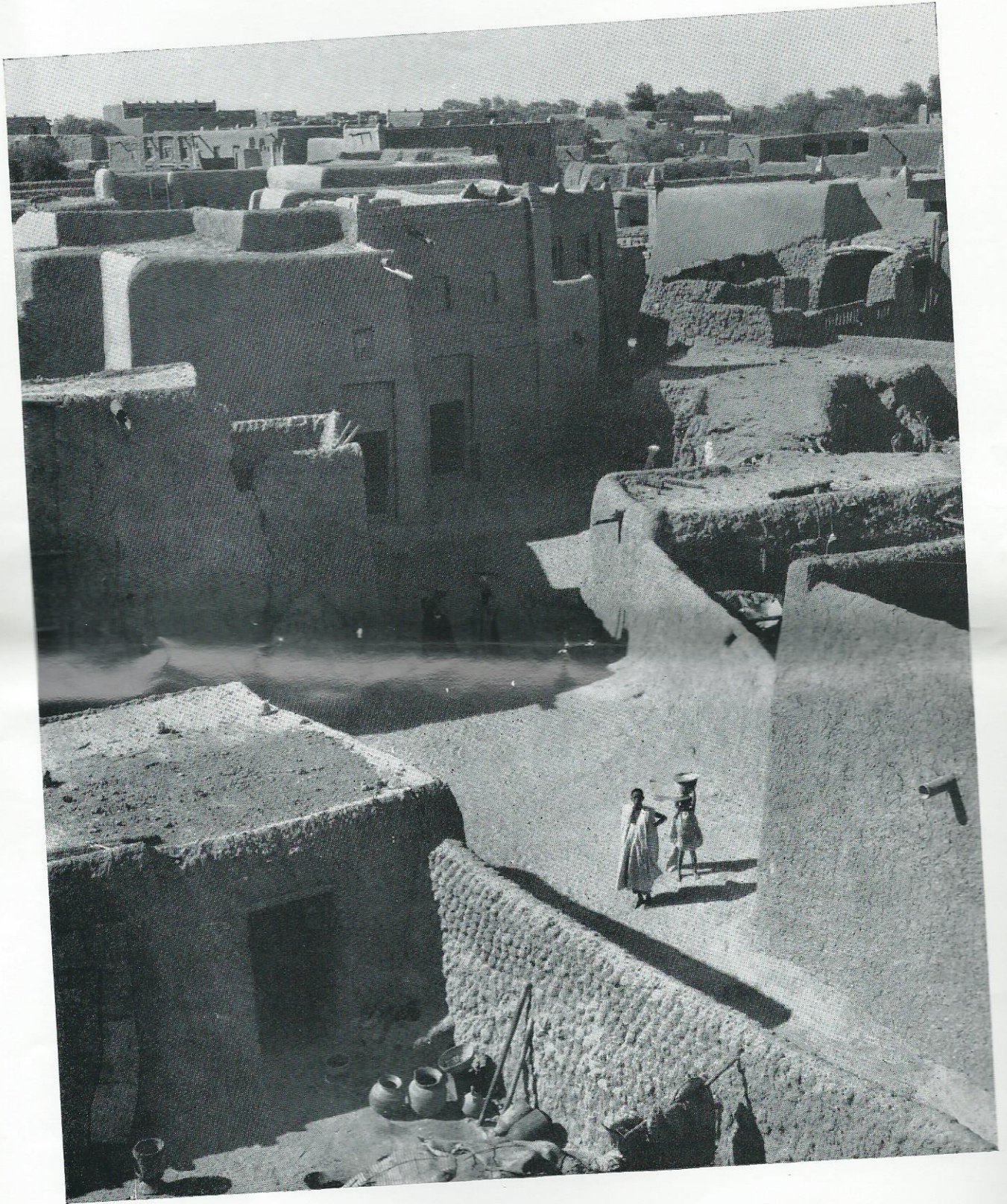
Write your Candidate Number here.....



Map for Question 9



5



TE&S 66/1836

Picture B for Question 11

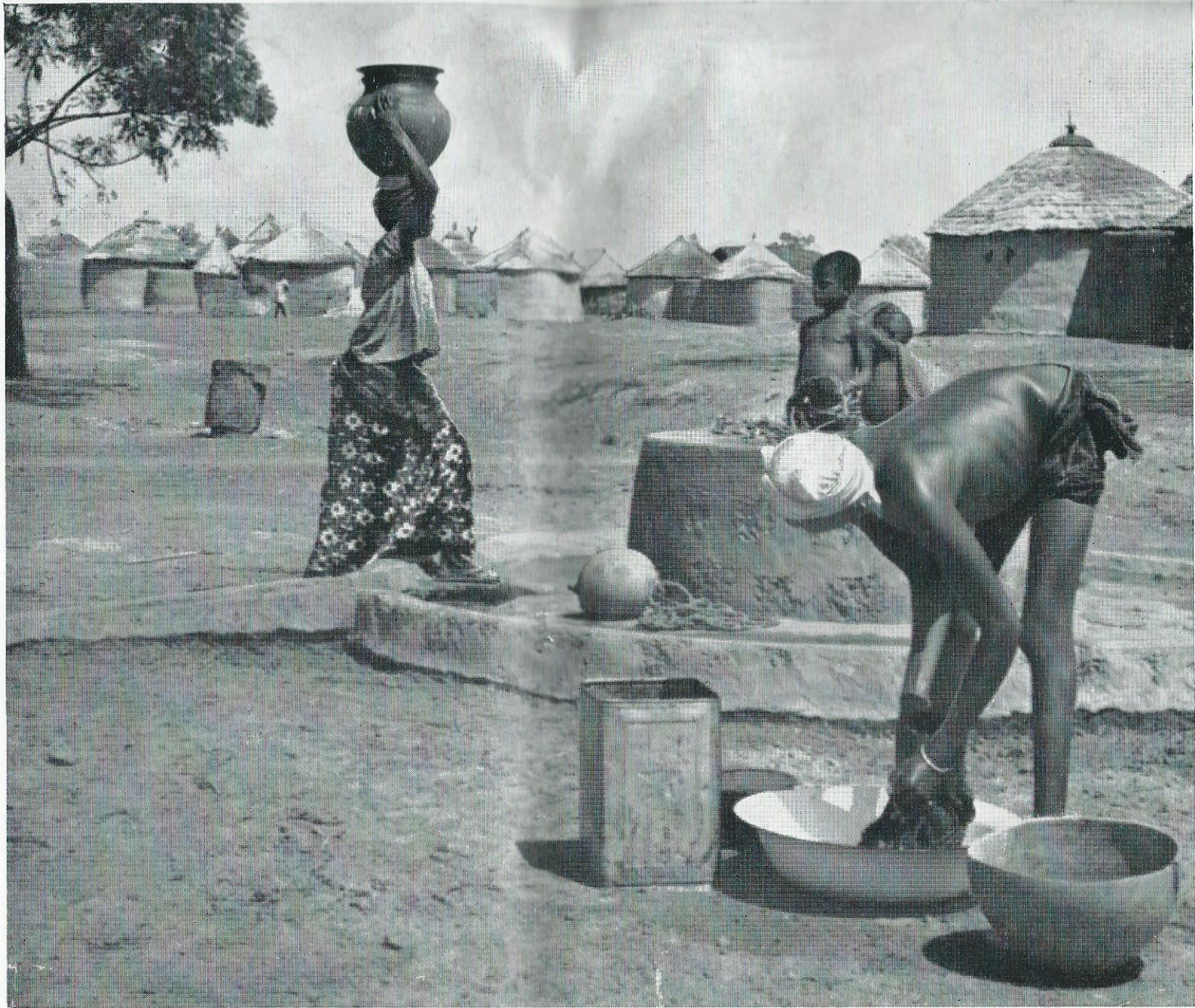
reproduced by kind permission of Camera Press Ltd.



TE&S 66/1836

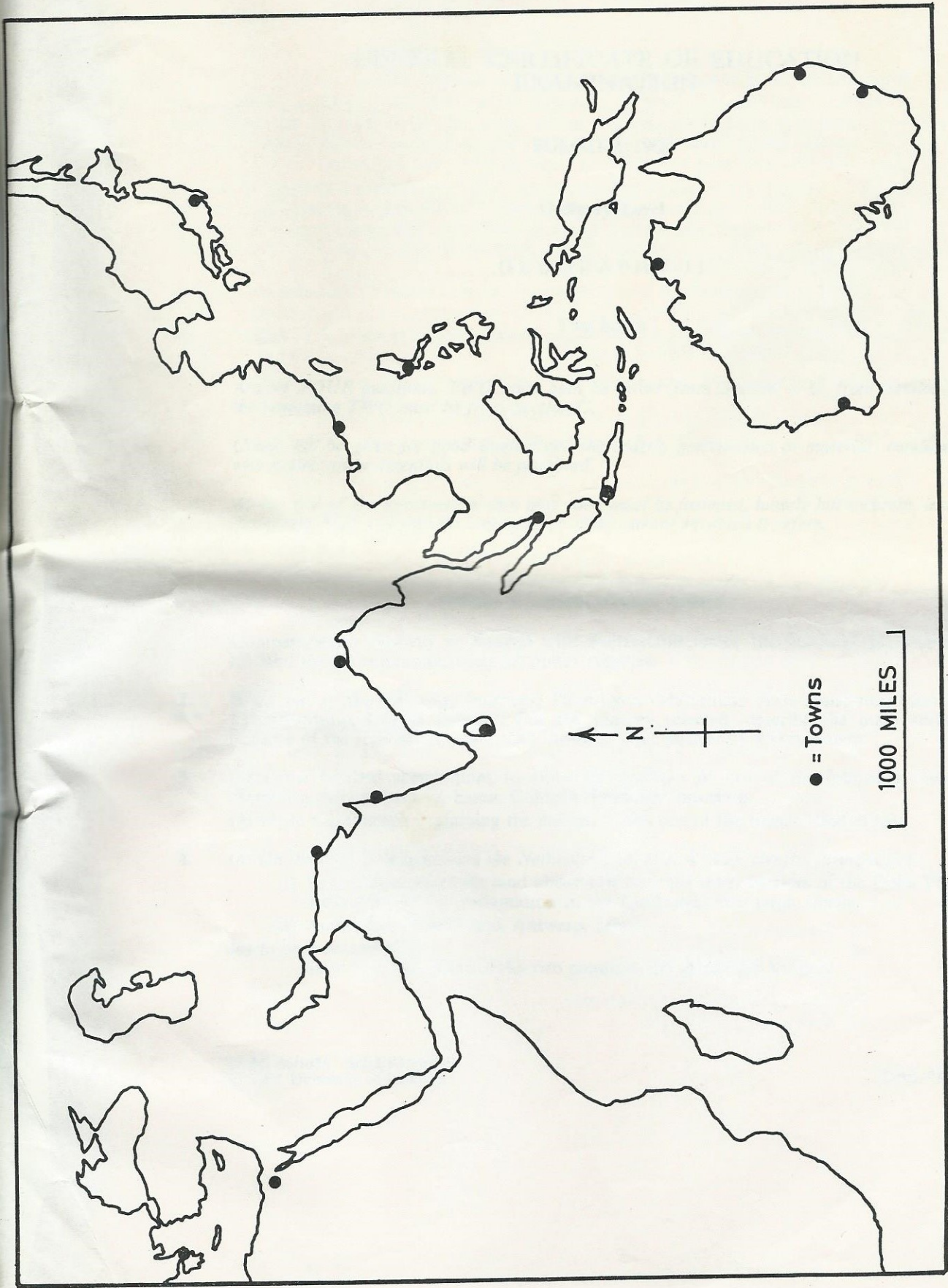
Picture C for Question 11

reproduced by kind permission of Camera Press Ltd.



Write your Centre Number here.....

Write your Candidate Number here.....



Map for Question 15

TE&S 66/1836